



DATASHEET

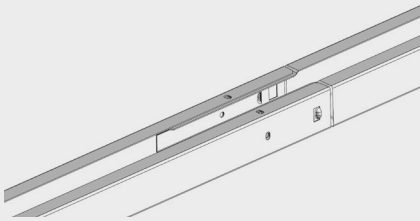
SOLARSPEED 3.0

SOUTH PORTRAIT

130126.ENG

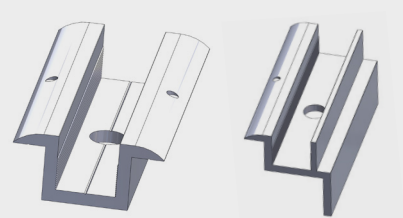
SOLARSPEED

ADVANTAGES



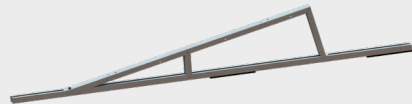
✓ click system

Basic units can be connected by a click system, which ensures good alignment and quick installation.



✓ clamps

The clamps are fastened onto the top profiles with M8 bolts for a reliable connection of your module.



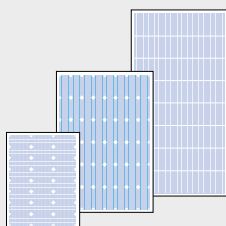
✓ semi-assembled triangles

Working with semi-assembled triangles not only saves on installation time, but also drastically reduces the number of individual parts on the roof!



✓ made of zinc-magnesium steel

Perfect for applications with long-term corrosion resistance requirements. Self-healing properties and good electrical conductivity.



✓ large modules

Ideal for new generations of large modules.

SOLARSPEED

COMPONENTS



STANDARD COMPONENTS

- 1** basic unit
 - semi-assembled triangle
 - rail
 - protective rubbers*
 - vertical reinforcement
- 2** set of L-profiles + centre piece
- 3** clamps + M8 bolts
- 4** backplate
- 5** ballast support
- 6** gamma terminale

**For PVC roofs use rubber with aluminium underlay.*

FOOTING SYSTEMS

- concrete footing (12kg) + hammer plug
- PP footing
- omega bracket

ADDITIONAL COMPONENTS

- ridge connection
- anchor profile
- C-rail end reinforcement
- centre piece for set of L-profiles

PROVIDED BY INSTALLER

- ballast tiles
- lightning connection
- earthing connection
- solar module

SolarSpeed ballast supply

with sets of L-profiles

- The sets of L-profiles are used to place ballast under the modules and also serve as extra reinforcement of the frame.
- The extra connection between the basic units makes the installation even stronger.



ballast with online tool

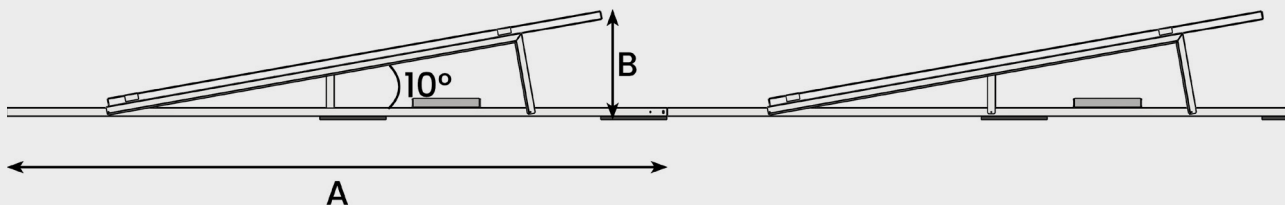
online calculator

- With our free online software, you can work out your projects very quickly and easily!
- Define the location and environment, make a sketch of the roof, choose the modules and the mounting frame and after drawing up the PV installation, our software calculates the correct ballast plan.
- All information regarding roof loads, mounting structure and placement are included in a clear report, as well as a complete bill of materials.

tested and approved

- When developing our mounting frames, the most recent applicable standards and guidelines are always taken into account.
- These frames have undergone wind tunnel testing and the results have been incorporated into our calculations. In this way, we can present a complete technical file when elaborating your project.

dimensions and angles



Panel Length	Pitch (A)	Height (B)
1640 - 1899 MM	2500 MM	380 - 425 MM
1900 - 2159 MM	3000 MM	425 - 470 MM
2160 - 2385 MM	3500 MM	470 - 505 MM

Other pitches are available on request.