



DATASHEET

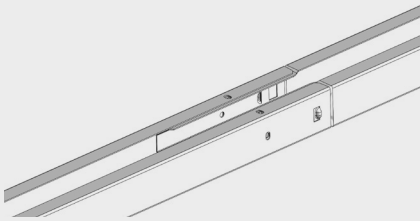
SOLARSPEED 3.0

EAST-WEST PORTRAIT INVERSE

130126.ENG

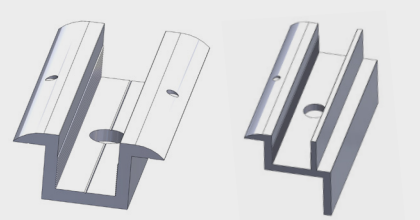
SOLARSPEED

ADVANTAGES



✓ click system

Basic units can be connected by a click system, which ensures good alignment and quick installation.



✓ clamps

The clamps are fastened onto the top profiles with M8 bolts for a reliable connection of your module.



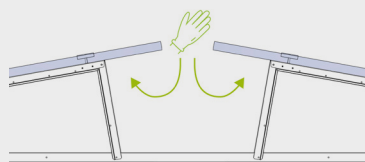
✓ semi-assembled triangles

Working with semi-assembled triangles not only saves on installation time, but also drastically reduces the number of individual parts on the roof!



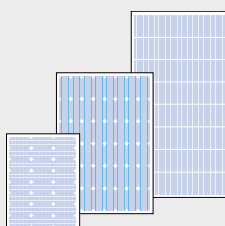
✓ made of zinc-magnesium steel

Perfect for applications with long-term corrosion resistance requirements. Self-healing properties and good electrical conductivity.



✓ inverted layout

Improved aerodynamics resulting in a lightweight solution and improved accessibility beneath modules.

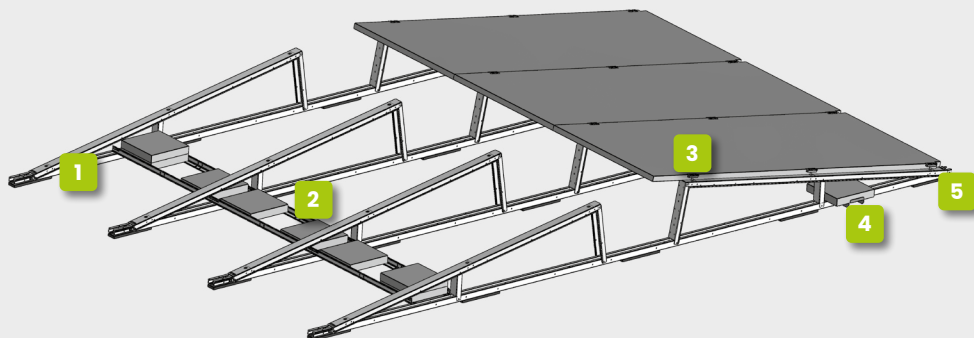


✓ large modules

Ideal for new generations of large modules.

SOLARSPEED

COMPONENTS



STANDARD COMPONENTS

- 1** basic unit
 - semi-assembled triangles
 - rail
 - protective rubbers*
 - vertical reinforcement
- 2** set of L-profiles
- 3** clamps + M8 bolts
- 4** ballast support
- 5** end rubber

FOOTING SYSTEMS

- concrete footing (12kg) + hammer plug
- PP footing
- omega bracket

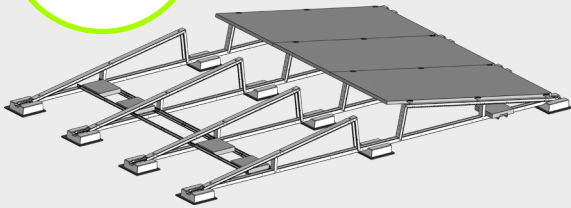
For PVC roofs use rubber with aluminium underlay.

ADDITIONAL COMPONENTS

- ridge connection
- anchor profile
- C-rail end reinforcement
- centre piece for set of L-profiles

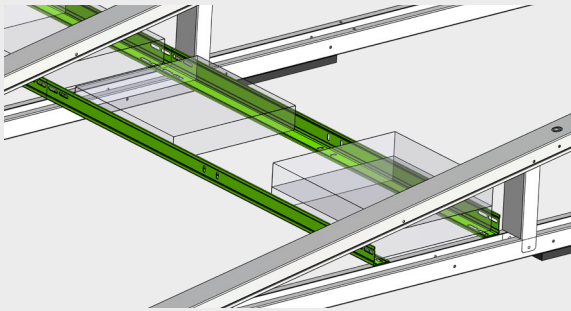
PROVIDED BY INSTALLER

- ballast tiles
- lightning connection
- earthing connection
- solar module



SolarSpeed on concrete footing

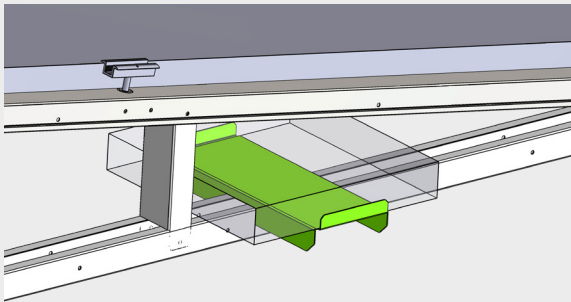
- Easy to assemble by means of hammer plugs.
- Concrete footing also serves as ballast.
- Very good drainage due to increased space under the profiles.
- Ideal for pebbled and green roofs. Far fewer pebbles have to be removed compared to traditional frames.



SolarSpeed ballast supply

with sets of L-profiles

- The sets of L-profiles are used to place ballast under the modules and also serve as extra reinforcement of the frame.
- The extra connection between the basic units makes the installation even stronger.



with ballast supports

- Ballast supports can be placed on the inside of the installation.
- The ballast support can be quickly and easily slid over the rail of the basic unit.

ballast with online tool

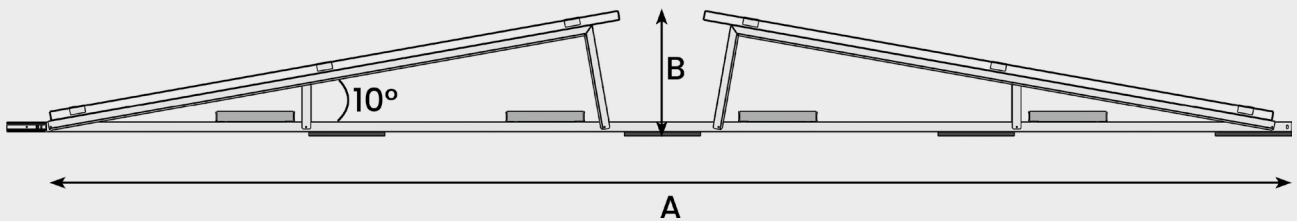
online calculator

- With our free online software, you can work out your projects very quickly and easily!
- Define the location and environment, make a sketch of the roof, choose the modules and the mounting frame and after drawing up the PV installation, our software calculates the correct ballast plan.
- All information regarding roof loads, mounting structure and placement are included in a clear report, as well as a complete bill of materials.

tested and approved

- When developing our mounting frames, the most recent applicable standards and guidelines are always taken into account.
- These frames have undergone wind tunnel testing and the results have been incorporated into our calculations. In this way, we can present a complete technical file when elaborating your project.

dimensions and angles



Panel Length	Pitch (A)	Height (B)
2000 - 2060 MM	4400 MM	440 - 450 MM
2061 - 2115 MM	4500 MM	450 - 460 MM
2116 - 2160 MM	4600 MM	460 - 470 MM
2161 - 2230 MM	4750 MM	470 - 483 MM
2231 - 2300 MM	4900 MM	483 - 495 MM
2301 - 2385 MM	5000 MM	495 - 505 MM

Other pitches are available on request.