

DATASHEET

SOLARSPEED 3.0

# EAST-WEST LANDSCAPE

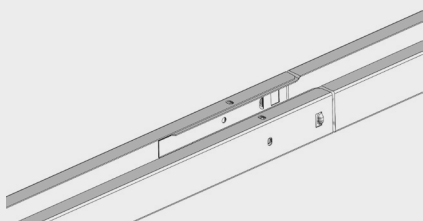
110526.ENG



# SOLARSPEED

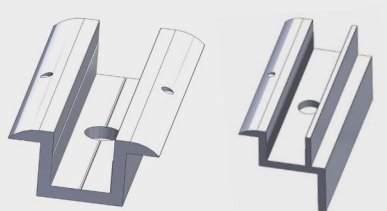
# ADVANTAGES

---



## ✓ click system

Basic units can be connected by a click system, which ensures good alignment and quick installation.



## ✓ clamps

The clamps are fastened onto the top profiles with M8 bolts for a reliable connection of your module.



## ✓ semi-assembled triangles

Working with semi-assembled triangles not only saves on installation time, but also drastically reduces the number of individual parts on the roof!

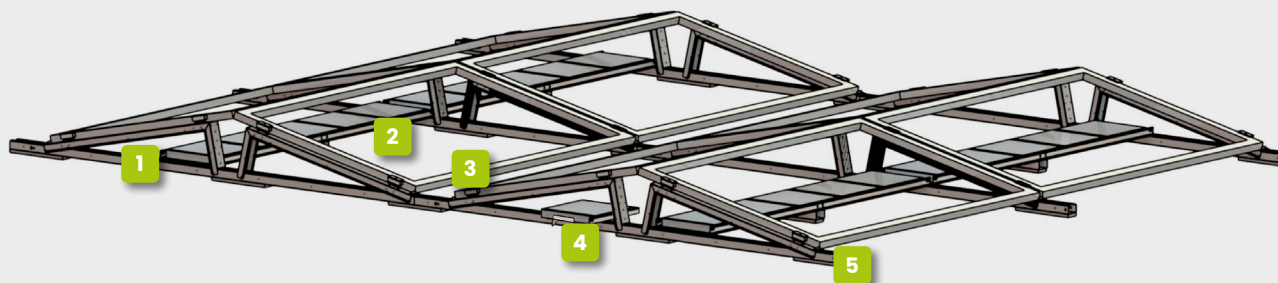


## ✓ made of zinc-magnesium steel

Perfect for applications with long-term corrosion resistance requirements. Self-healing properties and good electrical conductivity.

# SOLARSPEED

# COMPONENTS



## STANDARD COMPONENTS

- 1** basic unit
  - semi-assembled triangles
  - rail
  - protective rubbers\*
- 2** set of L-profiles + centre piece
- 3** clamps + M8 bolts
- 4** ballast support
- 5** end rubber

\* For PVC roofs use rubber with aluminium underlay.

## FOOTING SYSTEMS

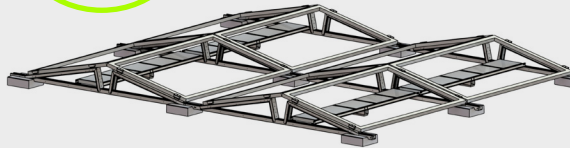
- concrete footing (12kg) + hammer plug
- PP footing
- omega bracket

## ADDITIONAL COMPONENTS

- ridge connection
- anchor profile
- C-rail end reinforcement

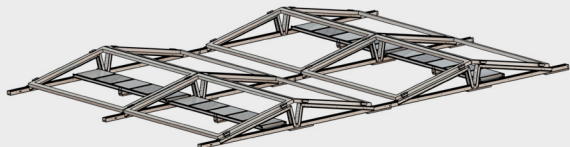
## PROVIDED BY INSTALLER

- ballast tiles
- lightning connection
- earthing connection
- solar module



## SolarSpeed on concrete footing

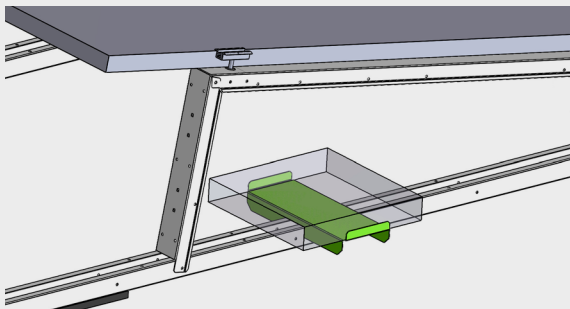
- Easy to assemble by means of hammer plugs.
- Concrete footing also serves as ballast.
- Very good drainage due to increased space under the profiles.
- Ideal for pebbled and green roofs. Far fewer pebbles have to be removed compared to traditional frames.



## SolarSpeed ballast supply

### with sets of L-profiles

- The sets of L-profiles are used to place ballast under the modules and also serve as extra reinforcement of the frame.
- The support in the middle prevents sagging of the L-profiles. These are secured with sheet metal screws.
- The extra connection between the basic units makes the installation even stronger.



### with ballast supports

- Ballast supports can be placed on the inside of the installation.
- The ballast support can be quickly and easily slid over the rail of the basic unit.

## ballast with online tool

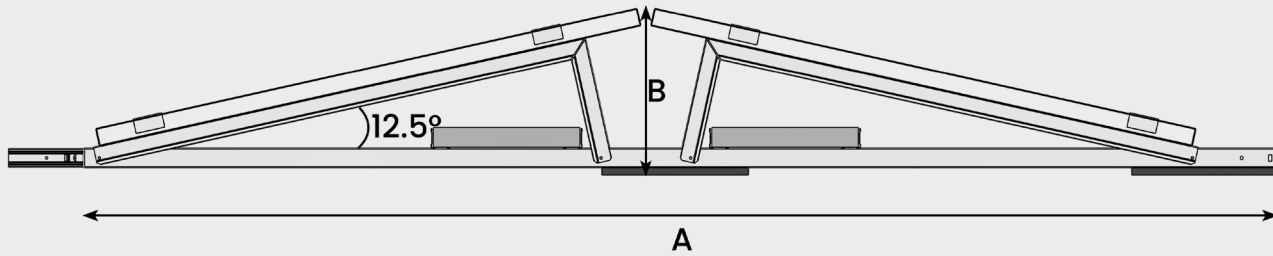
### online calculator

- With our free online software, you can work out your projects very quickly and easily!
- Define the location and environment, make a sketch of the roof, choose the modules and the mounting frame and after drawing up the PV installation, our software calculates the correct ballast plan.
- All information regarding roof loads, mounting structure and placement are included in a clear report, as well as a complete bill of materials.

### tested and approved

- When developing our mounting frames, the most recent applicable standards and guidelines are always taken into account.
- These frames have undergone wind tunnel testing and the results have been incorporated into our calculations. In this way, we can present a complete technical file when elaborating your project.

## dimensions and angles



Panel Width	Pitch (A)	Height (B)
950 - 1055 MM	2300 MM	300 - 320 MM
1056 - 1100 MM	2350 MM	320 - 330 MM
1101 - 1140 MM	2450 MM	330 - 340 MM
1141 - 1250 MM	2600 MM	340 - 355 MM

*Other pitches are available on request.*