



The Standard Fence2Sun

THE FENCE,
THAT PAYS FOR ITSELF

The Fence2Sun fence provides an efficient and cost effective way to demarcate properties while generating solar energy. Thanks to its simple and functional design, it is particularly suitable for installations on larger sites where the focus is on material efficiency and easy assembly. Whether for commercial and industrial areas or agriculture, the Fence2Sun provides a reliable solution for a wide range of potential applications.

Multiple benefits



The Fence2Sun serves as a fence, a power generator, and pays for itself. At the same time, it makes every user more independent from high electricity costs.

Space saving alternative



Due to its vertical design, the Fence2Sun requires significantly less space than a conventional PV system. Therefore it is an excellent alternative or complement to a rooftop system.

Demand orientated power production



The Fence2Sun generates higher yields at a low standing sun, especially during the morning and evening hours, as well as in the less productive winter months when energy demand is high.

Easy installation and maintenance



The Fence2Sun can be adjusted to terrain slopes and is quickly assembled with just a few screw connections. Due to its simple and ground level design, the maintenance effort is very low.

Durability



The use of specially designed glass-glass modules ensures lasting stability and robustness. High quality galvanization provides maximum corrosion protection. The cables are protected from external influences within enclosed frame profiles.

Above average performance



The combination of a shading optimized frame system and bifacial solar modules with high rear side efficiency enables an output of up to 1200 kWh/kWp per year.

Request your personalized offer today!

Next2Sun AG | Franz-Meguini-Straße 10a | 66763 Dillingen | Germany
+49 6831 126 900 | info@next2sun.de | www.next2sun.com

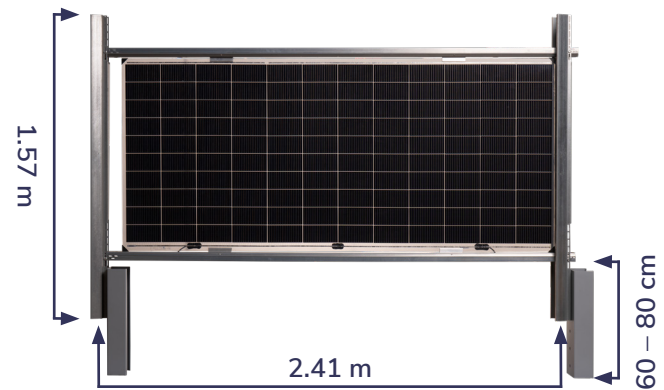


The right fence for everyone: The variants

Engineered in Germany

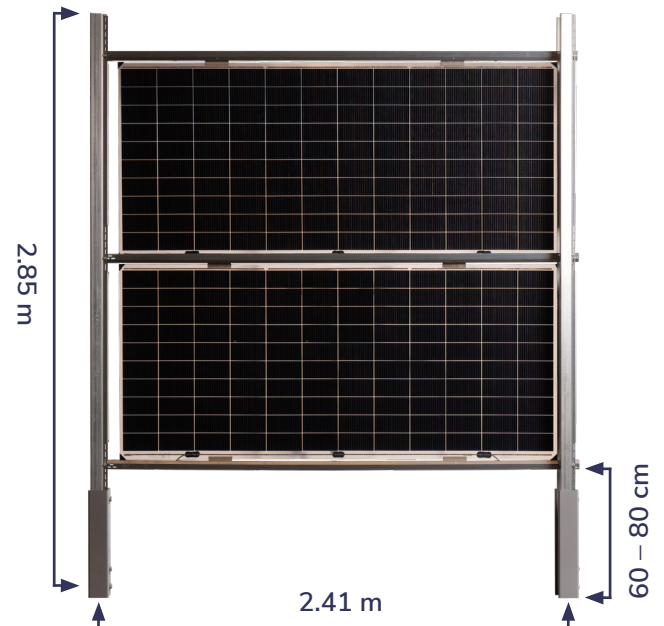
Standard Fence2Sun

- ✓ Height 1.57 m (up to 2.00 m possible)
- ✓ Width 2.41 m (center of post – center of post)
- ✓ Distance to ground 60 – 80 cm
- ✓ Installation via ramming or by point foundation



Standard Fence2Sun²

- ✓ Height 2.85 m
- ✓ Width 2.41 m (center of post – center of post)
- ✓ Distance to ground 60 – 80 cm
- ✓ Installation via ramming or by point foundation



All variants available in galvanized

Optional additions



Screw insulator
(for electric fence)



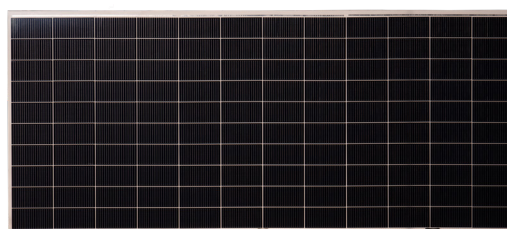
Climb-over protection



Bar mesh mats

Best performance: Cells2Sun

- ✓ Fast and easy wiring due to optimal arrangement of junction boxes
- ✓ Durable frameless bifacial glass-glass modules
- ✓ The latest high-performance cell technology
- ✓ Shading-optimized design for vertical bifacial systems
- ✓ Aesthetically pleasing tile design
- ✓ 15 years of German product warranty
- ✓ 30 years of linear German performance warranty



We stand for energy transition.