

Building a Greener World



CORPORATE BROCHURE



EcoGreenEnergy

Company Profile 01

PV Modules 11

EGE Home 17

BESS 21

Energy Solution 27

Our Projects 35

Company Profile

Eco Green Energy, founded in Paris in 2008, is a leading producer of ISO-certified manufacturer high-tech solar photovoltaic modules.

Now, after 17 years we produce complete smart solar systems and energy storage.

We operate a state-of-the-art giga-factory (3 GW) dedicated to producing our Eco Green Energy PV modules, featuring the latest TOPCon technologies.

Abiding by meticulous French-quality standards, our PV modules deliver up to 735Wp (G12 18BB) and an efficiency of 23.74%, comply with international quality and low-carbon standards, striving for a positive impact on both businesses and individuals' lives.

Our motto: #BuildingAGreenerWorld.
Let's work together to achieve this goal!



 **ECO GREEN ENERGY**





Business Map

AFRICA

Nigeria	Botswana
Kenya	Sudan
Madagascar	Tunisia
Egypt	Tanzania
Morocco	
South Africa	
Senegal	
Eritrea	
Ghana	
Togo	



AMERICA

Mexico
Colombia
Peru
El Salvador
Honduras
Ecuador
Argentina
Chile
Guatemala
Uruguay

MIDDLE EAST

Dubai
Saudi Arabia
Lebanon
Jordan

EUROPE

France
Germany
Italy
Poland
Netherlands
Spain
Greece
Cyprus
Romania
Bulgaria

Hungary
Luxembourg
Belarus
Belgium

ASIA / OCEANIA

China
Kazakhstan
Cambodia
New Zealand
New Caledonia
French Polynesia
Uzbekistan
Pakistan

Development History

Next Generation

2024

- Expanded production capacity to 3GW
- Low Carbon Footprint Certification
- Launched BESS product line and TOPCon-R

2023

Back to Roots

- European B2B online store
- Established R&D and IT center
- New Headquarter office in Paris

Going Giga

2022

- A brand new 2GW fully automated factory was created in Nantong
- Established Rotterdam warehouse

2018

Global Presence

- Established our second fully automated factory (300MW/year)
- Expanded to over 70 countries globally with 120+ distributors

Scaling up with Innovation

2015

- The first semi-automated factory was established in Nantong (120MW/year) setting the foundation for growth

2008

The Beginnings

- Eco Green Energy founded in France with a vision to make renewable energy available globally.

Manufacturing Expertise



Automated Technology

Improving revenue levels

Smart manufacturing, logistics, and business systems. Our state-of-the-art automated technology elevates production precision and efficiency, reduces costs, while ensuring top-tier quality and customer satisfaction.



Environmental Responsibility

Sustainability

Products focused on energy efficiency and minimal environmental impact. Most of our PVs hold Certisolis Low-Carbon Footprint Certification. Our factory is powered by 1.6MW of energy from PV modules, and we adhere to strict recycling processes.



Transparent Process

Efficient manufacturing

We focus on efficiency and transparency in manufacturing, providing EL tests, performance tests, and BOM, along with certifications such as ISO9001, ISO14001, CE, etc.



75+
Countries



120+
Distributors
worldwide



25,000m²
production area



150+
Global Certifications
and Patents



3GW
Annual Supply
Capacity



Vision

At Eco Green Energy, we envision a carbon-neutral world. Through innovation, responsibility, and collaboration, we can empower communities while protecting the planet for future generations.



Mission

Our mission make renewable energy available and accessible to all. We strive for this by delivering high-quality, innovative, and eco-friendly energy solutions that drive the adoption of renewable energy globally.

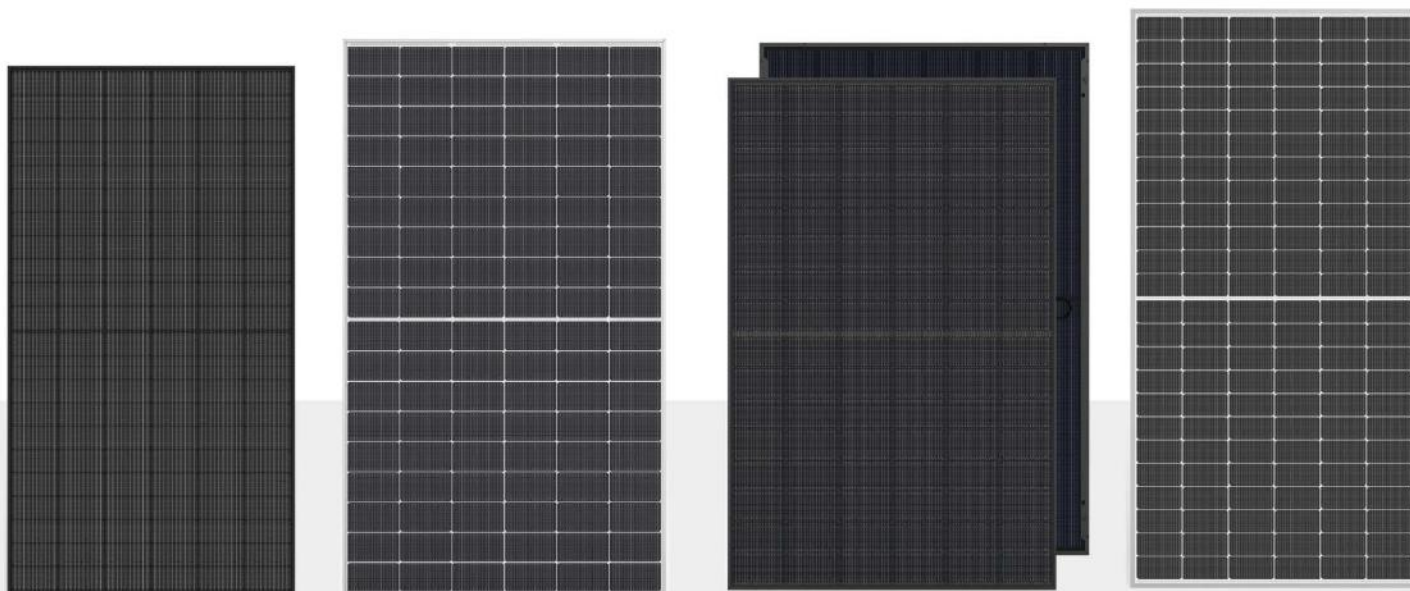
ESG strategic Development



The **5-pillar ESG plan** establishes a holistic approach to sustainability, creating meaningful contributions across all 17 UN SDGs. We are committed to:

- **Environmental Responsibility** with sustainable manufacturing
- **Social Impact** with Strong collaborations and inclusion across the value chain
- **Governance Excellence** through transparency and accountability and above all: dedication to quality

PV Modules Certification



Quality
IEC 61215



Resistance to
environmental factors
IEC 61701, IEC 61216
IEC TS 62804, IEC 60068



Safety
IEC 61730



EMC
IEC 61000



Low carbon footprint
Certisolis ECS PPE2



Reaction
to fire

Méthode ECS PPE2
Score Max. (kg eq CO₂ / kWc)

PPE2 V1
550

Atlas TOPCon 440 Wc

459,139

Atlas TOPCon-R 455 Wc

455,043

Atlas TOPCon-R 500 Wc

464,721

Atlas TOPCon 585 Wc

459,699



Our Nantong base was named as Zero Carbon Factory by TÜV SÜD, And we also reached the milestone of 100% green energy for PV module manufacturing.





PV Modules

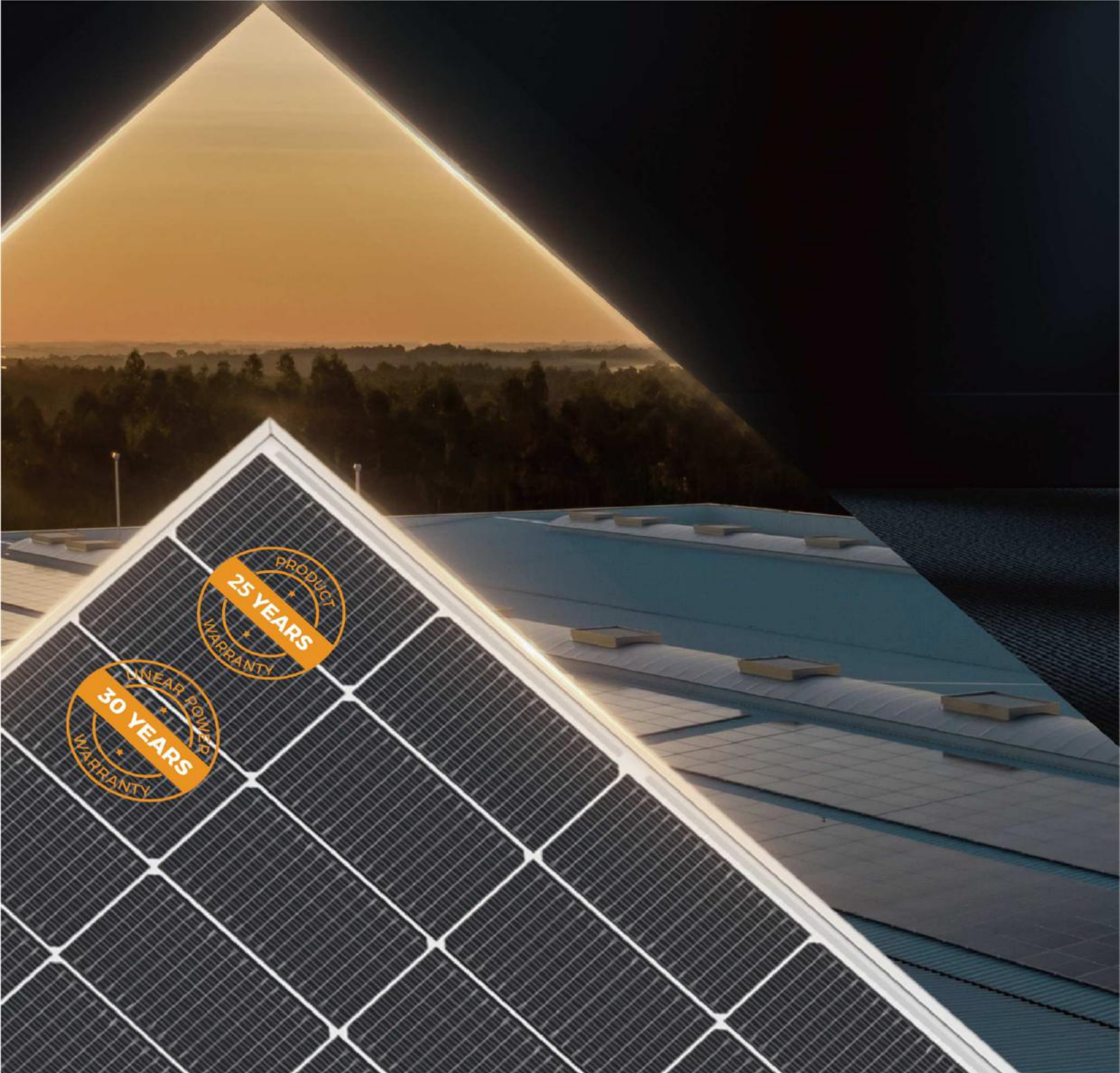
- **Enhanced half-cut technology**
- **Grade A Cells**

Suitable for ALL Environments

- **IEC 61215 + IEC 61730:** Performance and safety of PV modules, Resistance to Environmental Factors

Ideal for Agrivoltaics

- **IEC 62716 (Ammonia Corrosion):** Resistance to ammonia exposure
- **IEC 61000 (EMC):** Reducing interference risks in sensitive applications



Great for Floating, Offshore & Coastal

- IEC 61701 (Salt Mist Corrosion): Resistant to corrosion in saline environments

Fitting for Arid and Desert Installations

- IEC TS 62804 (PID): Resilient against performance degradation under high-voltage stress
- IEC 60068-2-68 (Dust and Sand Resistance)

PV Modules

Atlas PRO N-type TOPCon Series

TOPCon Bifacial

- G12 (210*210mm) cells
- Less Hot Spot Shading effects
- Lower temperature coefficient
- Anti PID/ Low LID protection



Applications



Module	Power output (Pmax)	Dimensions	Weight	Maximum Efficiency
Atlas PRO TOPCon 715-735W(GM12)	735 W	2384x1303x33 mm	38.7 kg	23.66 %

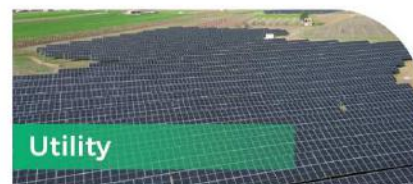
Atlas N-type **TOPCon-R Series**

TOPCon Bifacial

- M10R (182*210mm) cells
- Less Hot Spot Shading effects
- Lower temperature coefficient
- Anti PID/ Low LID protection



Applications



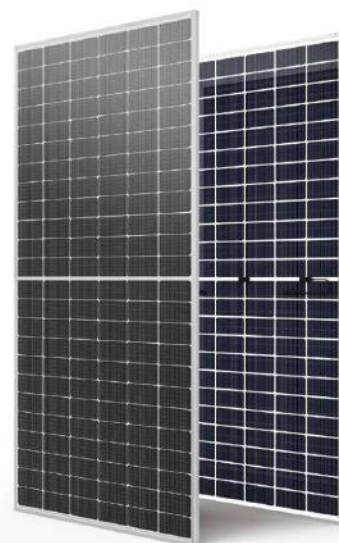
Module	Power output (P _{max})	Dimensions	Weight	Maximum Efficiency
Atlas TOPCon-R 620-640W(GM10R)	640 W	2382x1134x30 mm	34.7 kg	23.69 %
Atlas TOPCon-R 565-585W(GM10R)	585 W	2172x1134x30 mm	31.5 kg	23.75 %
Atlas TOPCon-R 500-525W(GM10R)	525 W	1961x1134x30 mm	28.0 kg	23.62 %
Atlas TOPCon-R 450-470W(GM10R)	470 W	1762x1134x30 mm	25.4 kg	23.52 %

PV Modules

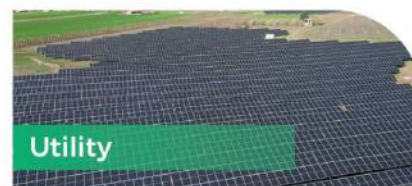
Atlas N-type TOPCon Series

TOPCon Bifacial

- M10 (182*182mm) cells
- Less Hot Spot Shading effects
- Anti PID/ Low LID protection
- Lower temperature coefficient







Applications



Module	Power output (Pmax)	Dimensions	Weight	Maximum Efficiency
Atlas TOPCon 485-505W(GM10)	505 W	1908x1134x30 mm	27.5 kg	23.34 %
Atlas TOPCon 435-455W(GM10)	455 W	1722x1134x30 mm	24.8 kg	23.30 %
Atlas TOPCon 635-655W(GM10)	655 W	2465x1134x35 mm	35.8 kg	23.43 %
Atlas TOPCon 585-605W(GM10)	605 W	2278x1134x30 mm	33.0 kg	23.42 %
Atlas TOPCon 535-555W(GM10)	555 W	2094x1134x30 mm	30.3 kg	23.37 %

Atlas Flex Series

-  Excellent energy yield
-  Customizable
-  Ultralight
-  Durable
-  Minimal roof stress



Applications

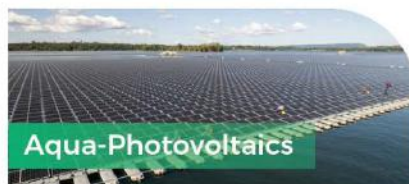
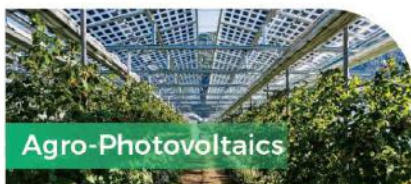


Atlas TOPCon Agri Series

-  High transparency ratio 33%
-  Anti PID/ Low LID protection
-  Lower temperature coefficient
-  Less Hot Spot Shading effects
-  Enhanced Bifaciality Factor
-  Exceptional Mechanical Resistance



Applications



Atlas Home Kit



- **Built to Last:** Corrosion-resistant anodized aluminum frame for year-round durability.
- **Unyielding Strength:** 2mm thick main frame withstands powerful winds up to 2400pa.
- **Plug & Play Perfection:** Effortless installation with no tools required.
- **Maximum Sunlight Harvesting:** Adjustable tilt angle for optimal efficiency in every season and at every location

Width	Length	Weight
1.13M	1.79M	36KG



Atlas Urban Kit



- **Built to Last:** Corrosion-resistant anodized aluminum frame for year-round durability.
- **Unyielding Strength:** 2mm thick main frame withstands powerful winds up to 2400pa.
- **Simple and easy to install:** No need for professional personnel to install.
- **Maximum Sunlight Harvesting:** Adjustable tilt angle for optimal efficiency in every season and at every location

Width	Length	Weight
1.154M	1.724M	29KG



EGE Home Carport



- **Adjustable:** Tilt angle selection, Initial tilt angle selection: 5°/10°/15°
- **Waterproof design:** block and collect rainwater
- **Easy assembly:** No machinery, simple operations, Solar panel fixing from below

Size	Width	Length	Weight
PV carport-single	3M	4M	425KG
PV carport-double	5.2M	4M	620KG



EGE Home LFP Stack-mount



5120Wh

Nominal Energy Capacity	5.12 kWh
Nominal Capacity	50 Ah
Rated Voltage	102.4 V
Operating Voltage Range	91.2 ~ 115.2 V
Max Charging / Discharging Current	25 / 40 A
Dimensions W*D*H	636*330*1192 mm
Weight	261 kg



EGE Home LFP Wall-mount



- Featuring a thin, space-saving profile with a modern aesthetic. The surface is crafted from durable materials, ensuring both functionality and elegance
- Reliable IP65 waterproof rating, this system is designed for both indoor and outdoor applications, backed by a 15-year warranty for long-lasting, worry-free performance
- Easy plug-and-play installation with efficient wiring and minimal setup time, high energy density to maximize power output and lower costs



5120Wh

Nominal Energy Capacity	5.12 kWh
Nominal Capacity	100 Ah
Rated Voltage	51.2 V
Operating Voltage Range	43.2 - 57.6 V
Max Charging / Discharging Current	50 / 100 A
Dimensions W*D*H	420*140*650 mm
Weight	45 kg

10240Wh

Nominal Energy Capacity	10.24 kWh
Nominal Capacity	200 Ah
Rated Voltage	51.2 V
Operating Voltage Range	43.2 - 57.6 V
Max Charging / Discharging Current	100 / 150 A
Dimensions W*D*H	630*184*750 mm
Weight	85 kg

EGE Home LFP Rack-mount



5120Wh

Nominal Energy Capacity	5.12 kWh
Nominal Capacity	100 Ah
Nominal Voltage	51.2 V
Operating Voltage Range	44.8 - 57.6 V
Max Charging / Discharging Current	100 / 100 A
Dimensions W*D*H	440*535*1200 mm (2 clusters)
Weight	720 kg

Thin, space-saving profile with modern aesthetics

Crafted from durable materials, for both functionality and elegance
Efficient wiring, minimal set-up time

High energy density to maximize power output and lower operational costs

Advanced cell firewall technology preventing thermal runaway and heat spread

EGE Home/Commercial LFP Rack-mount HV



63.84kWh

Nominal Energy Capacity	63.84 kWh
Nominal Capacity	104 Ah
Nominal Voltage	614.4 V
Operating Voltage Range	547.2 - 691.2 V
Max Charging / Discharging Current	50 / 100 A
Dimensions W*D*H	580*650*2200 mm
Weight	726 kg

Stable and long-term performance, even under heavy use. The continuous 1C discharge rate guarantees reliable power delivery

Remote, intelligent monitoring capabilities allow users to track system status and optimize energy usage in real-time.

Compact 3U modular design for quick installation and hassle-free maintenance, reducing downtime and labor costs

Built-in safety features, including multiple layers of protection, ensure that the system operates safely under all conditions



GAIA Energy Storage

Features:

Modular Energy Storage solutions for commercial and industrial applications from 211kWh to 5.01MWh

Product Highlights:

- 5-year Cell Warranty
- LiFePO4 Battery
- Liquid Cooling
- Intelligent operations



Core Features:

Achieve grid independence
Versatile application scenarios
Reduced operations and maintenance costs

Certifications:

Each unit has a variety of certificates including



UL 1973



UL 9540A



IEC 62619



UN38.3



IEC 62477



IEC 60730



IEC 61000



IEC 62933



GB/T36276

EGE-GAIA

- Reliable IP65 waterproof rating
- Multiple mounting options
- Cell firewall technology
- 15-year warranty
- Plug-and-play



EGE GAIA Pro 3.42MWh

System Nominal Energy	3421 kWh
System Rated voltage	1267.2 vdc
System Voltage Range	990 ~ 1445.4 vdc
System Rated Power	1710.5 kW
Enclosure Rating	IP54
Dimensions W*D*H	6058*2438*2896 mm
Weight	37 t

· Advanced safety features, including cell thermal runaway suppression, pressure relief systems with automatic fire extinguishing, and a fire sprinkler system.

· Designed for efficient energy storage and distribution, excellent for large-scale projects.

· Engineered for consistent performance and reliability across various demanding applications.



Reduced Operation and Maintenance Costs



warranty: 5 years



Flexibility for Diverse Applications



Maximized Space Utilization



Liquid Cooling

EGE GAIA Core 211 kWh AIO

System Nominal Energy	211 kWh
System Rated voltage	704 vdc
System Voltage Range	600 ~ 803 vdc
System Rated Power	100 kW
Enclosure Rating	IP55
Dimensions W*D*H	1340*1300*2260 mm
Weight	2.6 t

- Integrated control box for easy installation.
- Supports parallel connections and offers customization options to adapt to specific project needs.

- Integrated EMS, PCS, and BMS.
- Enables remote control for efficient management and swift responses to issues.

- Includes advanced safety features like temperature and smoke sensors, real-time fault detection protocols etc.

EGE-GAIA



Standard-size
container 20ft



Long Lifespan and
High Performance



Lower Operational
and Installation Costs



Optimized Energy Management
for Large Projects



Liquid Cooling



EGE GAIA Pro 5.01 MWh

System Nominal Energy	5015 kWh
System Rated voltage	1331.2 vdc
System Voltage Range	1040 ~ 1497.6 vdc
System Rated Power	2507.5 kW
Enclosure Rating	IP55 (except liquid cooler)
Dimensions W*D*H	6058*2438*2896 mm
Weight	43 t

· Delivers superior energy storage capacity within a standard 20ft container, maximizing space efficiency.

· Engineered for longevity with a lifecycle of up to 12,000 cycles, ensuring a durable and reliable energy solution.

· Features intelligent temperature regulation, maintaining optimal operating conditions at 3°C for enhanced system stability and efficiency.

· Equipped with advanced monitoring and control features for seamless integration into existing energy systems and enhanced operational oversight.



Liquid Cooling



5-year Cell Warranty



Flexibility for Diverse Applications



Grid independence



Long-term efficiency

EGE GAIA Core 760kWh

System Nominal Energy	760 kWh
System Rated voltage	1267.2 vdc
System Voltage Range	990 ~ 1445.4 vdc
System Rated Power	380 kW
Enclosure Rating	IP55
Dimensions W*D*H	2400*1400*2500 mm
Weight	8 t

- Ideal for low-voltage areas, urban buildings, and community energy storage needs, adapting seamlessly to various environments
- High Safety.
- Cabinet fire resistance rating of 1.5 hours, integrated temperature and smoke sensors, and a fire sprinkler protection system.

- Provides real-time monitoring, fault logging, and offline mode support for continuous operation even in isolated conditions.

- This combination of versatility, safety, scalability, and intelligent operation makes the EGE BESS 760kWh an ideal solution for modern energy storage needs.

- Compatible with both 20ft and 40ft containers, and supports parallel connections and system expansion, making it highly adaptable to growing energy demands.



EGE as Full Service provider

With expert engineers based in our offices in France as well as China, we provide complete, turnkey energy solutions worldwide. From project development, design, production, financing, Eco Green Energy is the one-stop project partner through its entire lifecycle.

Project Carbon Footprint

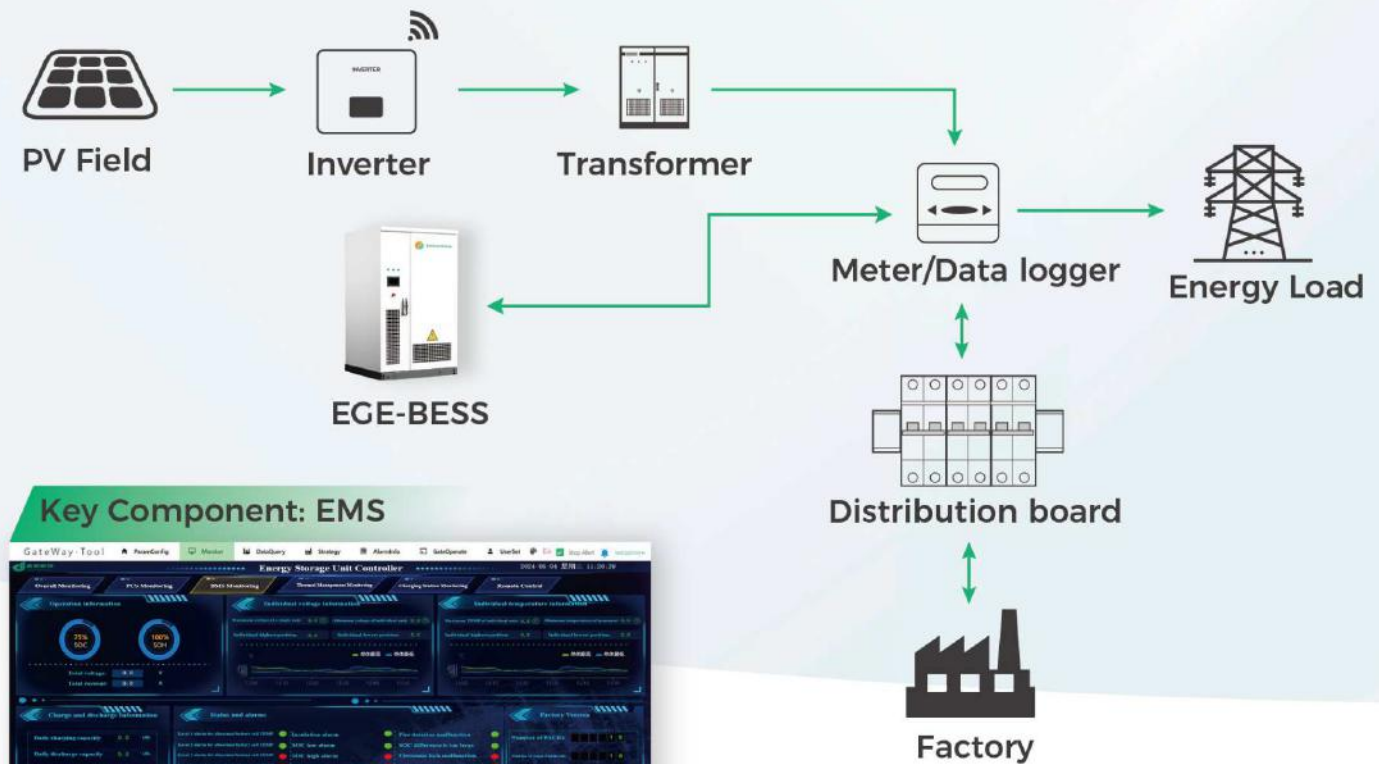
Implementing our complete solution
will help your project

cut up to 100%

Off your current CO2 emissions



EGE - a Complete Solution: System Diagram 1: C&I



TOPCon-R Bifacial 500W

- High-efficiency 23.11% with rectangular wafers.
- Smaller and lighter frame: 1961x1134x30mm, 28kg
- Certisolis Certified
- Reduce installation costs, lower carbon footprint.



EGE-BESS-211kWh-AIO

- Integrated EMS, PCS, and BMS, easy installation, and compatibility.
- Up to 4 off-grid connections or 20 on-grid connections.
- Easy to install and start using.



Inverter

Optional - If the project is designed and supplied by EGE from scratch, we can provide a variety of inverters from our top brand collaborators.



Cables

We can provide the entire C&I solutions down to cabling, to ensure full compatibility and excellent performance.

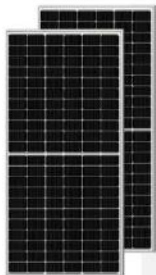
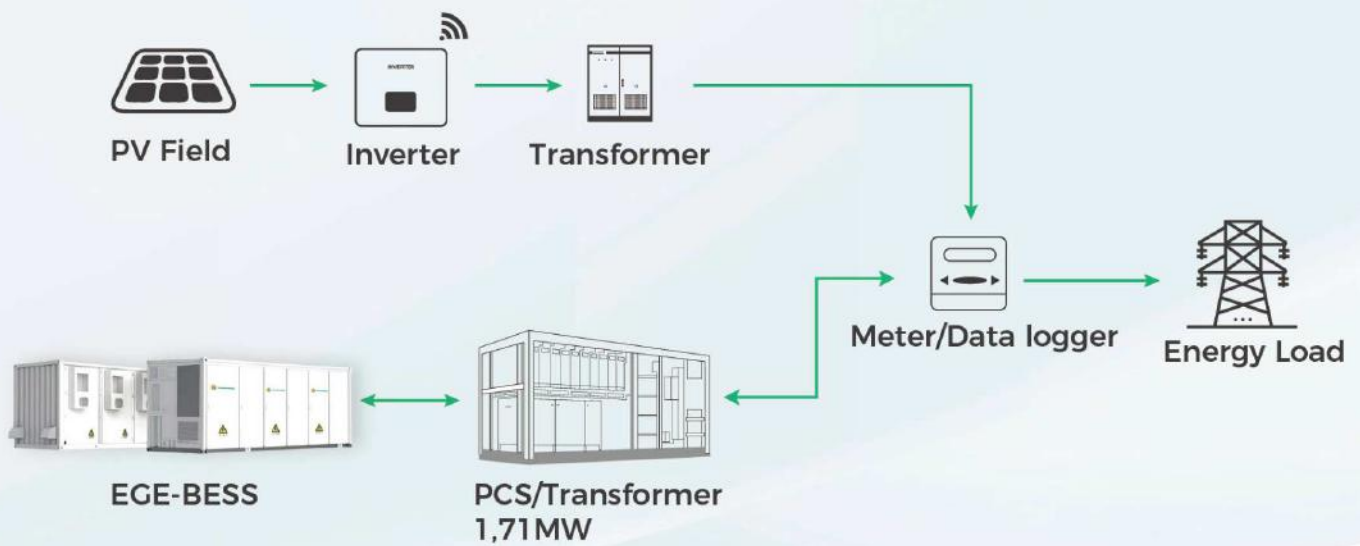


Mounting System

Optional-For projects in need of or otherwise fully supplied by EGE, we offer a complete range of mounting systems and accessories for all needs.

EGE - a Complete Solution:

System Diagram 2: Utility



TOPCon-R Bifacial 620W

Extremely efficient modules with higher efficiency than their larger counterparts but with smaller size, easy to handle while delivering the max of energy needed.



EGE-BESS-3.42MWh

With a cycle life of > 8000, integrated safety systems, BMS and Monitoring system this unit is perfect for large-scale projects with high energy demands.



Inverter

Optional - If the project is designed and supplied by EGE from scratch, we can provide a variety of inverters from our top brand collaborators.



Cables

We can provide the entire C&I solutions down to cabling, to ensure full compatibility and excellent performance.



Racking system

Depending on your project's needs, we have the full range of racking systems suitable for solar farms, agrivoltaics, floating PV and other requirements.



Combiner box

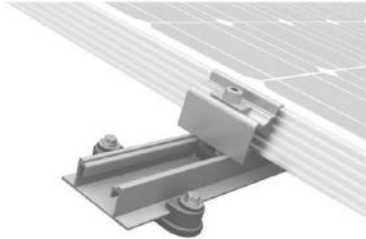
For DC/AC conversion and enhanced safety.

EGE-Solar Accessories



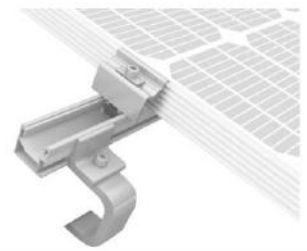
Cables

- Designed for solar panel connections, built to endure harsh outdoor conditions



SpeedRail System

- High-quality stainless steel brackets
- Flexible and adjustable connection



SingleRail System

- Quick and low-cost
- Secure snap-in assembly without needing to be screwed into



EGE MC4 Connector

- High temperature resistant, fireproof, anti-aging, UV resistant.
- Excellent sealing with IP67 waterproof and dustproof rating.
- Broad compatibility with MC4 connectors.



Floating Bracket

- Floating solar can design and install on existing ponds, eliminating the need to use premium land space.



SBN2-01 Stud Bolt Group



LFN2-01 L-feet Group

- Metal roof solar mounting bracket (L feet)

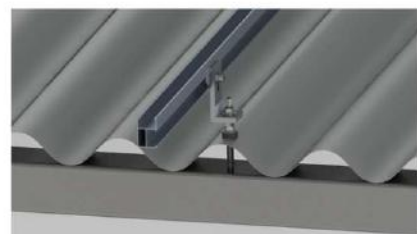


Mounting Bracket

- Metal roof solar mounting bracket (L feet)



End Clamp



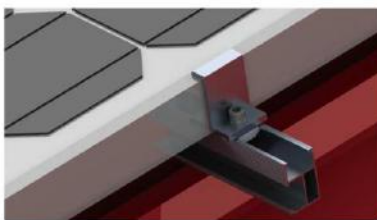
Mounting Bracket

- Corrugated roof solar mounting bracket (L feet with Stud Bolt)



Solar Bracket

- Tile roof solar bracket (roof hook)



ECN2 End Clamp



MCN2 Mid Clamp Group



Aluminium Roof Hooks



Hanger Bolts



Stainless Steel Roof Hooks



Sheet Metal Folding Clamps

EGE-Solar Controller



HP Series

- Multiple Load Modes for Diverse Needs
- Easy to install and simple to use
- 360° Security from Hardware to Software
- TVS lightning protection is adopted



ML Series

- Supports RS232、RS485、(RV-C protocols)
- Natural cooling, absolutely quiet
- High-Quality Components for Stability
- MPPT with up to 99.9% efficiency



North
Macedonia
20MW

Moldova
1.5MW

Italy
**750
kW**



Utility



Morocco,
Sahara Desert
295kW



U.S.
Virgin Islands
8MW



Italy
2MW

Ecuador's First
Floating PV
302.4kW



C&I



Spain
680kW

Mexico
270kW



Latvia
3.2kW

Colombia
20kW



Residential



France
9kW

